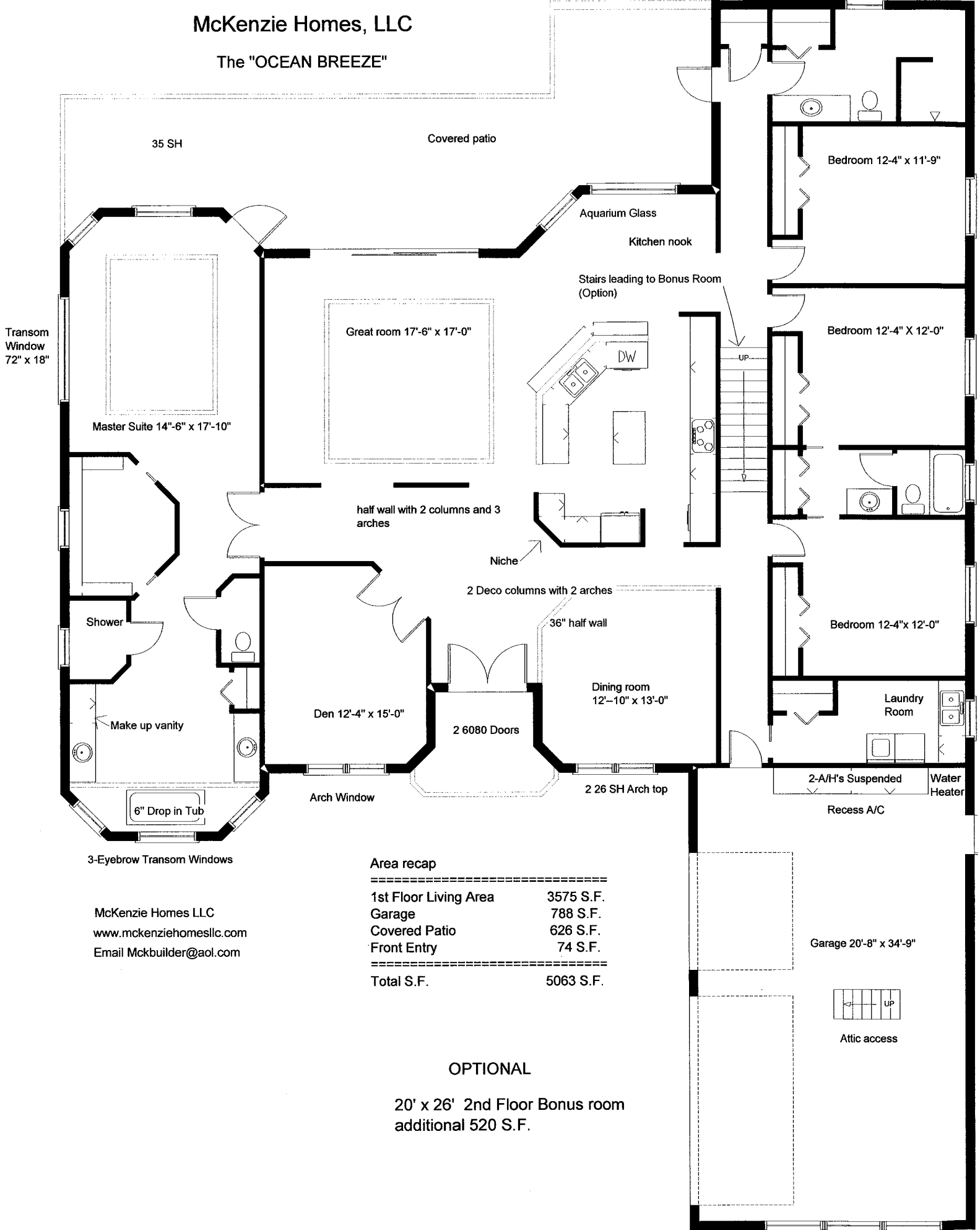


# McKenzie Homes, LLC

## The "OCEAN BREEZE"



Transom Window  
72" x 18"

35 SH

Covered patio

Master Suite 14'-6" x 17'-10"

Great room 17'-6" x 17'-0"

Aquarium Glass

Kitchen nook

Stairs leading to Bonus Room  
(Option)

Bedroom 12'-4" x 11'-9"

Bedroom 12'-4" X 12'-0"

half wall with 2 columns and 3 arches

Niche

2 Deco columns with 2 arches

36" half wall

Bedroom 12'-4"x 12'-0"

Shower

Make up vanity

Den 12'-4" x 15'-0"

2 6080 Doors

Dining room  
12'-10" x 13'-0"

Laundry Room

6" Drop in Tub

Arch Window

2 26 SH Arch top

2-A/H's Suspended

Water Heater

Recess A/C

3-Eyebrow Transom Windows

### Area recap

1st Floor Living Area	3575 S.F.
Garage	788 S.F.
Covered Patio	626 S.F.
Front Entry	74 S.F.
<b>Total S.F.</b>	<b>5063 S.F.</b>

McKenzie Homes LLC  
www.mckenziehomesllc.com  
Email Mckbuilder@aol.com

Garage 20'-8" x 34'-9"



Attic access

### OPTIONAL

20' x 26' 2nd Floor Bonus room  
additional 520 S.F.